



**Strength Through Support, Success Through Respect**

**Attendance Winners**

Name	%
Franky F	100
Benny A	89.29
Olly F	85.71

*Well done to our top three students!*

**Class Dojo Rewards**



KS3	KS4
Harry M	Megan W
Olly F	Daisy G
Max M	Curtis L

*Well done to our top three students from KS3 and KS4!*

**Outdoor Education**

April has seen an improvement in the weather and some more activities starting to take place in the sunshine - a much-needed boost of vitamin D for all! The DofE preparation is now complete, with Year 10 and 11 students heading out to complete their qualifying expedition on Thursday 30<sup>th</sup> April to Friday 1<sup>st</sup> May. We wish them all the luck in completing this successfully.

KS3 have been taking on some challenging climbs at Awesome Walls with a real improvement in confidence and technique being visible.



**Shout out to Libby Cook!**

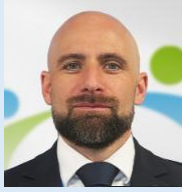
This is Libby's third season dancing with Symphony Morris; a dancing troupe based at Linnets Football Club. This season Libby is taking the role of leader, setting time, pace and the flow of dances for the junior team. She is also enjoying her new position in seniors, tackling more advanced and technical dance routines. Rachel and Aimee (Key workers) went along to give their support to Libby, when she danced out at Walton Gardens recently; they were wowed by the complex dance routines and fabulous dresses!

Libby trains hard with the other members, perfecting their routines, every Wednesday, then enters competitions each Sunday from March onwards. The troupe also works hard to raise funds, through raffles, bingo, and sponsorship activities throughout the season. The troupe is growing year on year, with now over 100 dancers.

The Bridge School wish Libby and the rest of Symphony Morris, the best of luck in their upcoming competitions and at champs, at the end of the season.



## A warm welcome to our new members of staff



**Adam M**  
**Deputy Headteacher**

I bring extensive experience to the role, having spent 17 years working at Wade Deacon High School, which has given me a strong understanding of the local community and educational context. During my time at Wade Deacon, I held leadership responsibilities for 14 years, including roles as Leader of Physical Education, Head of Year, Assistant Vice Principal and Senior Assistant Vice Principal. As a Senior Leader, I was accountable for a wide-ranging portfolio, including whole-school standards, behaviour and attitudes to learning, rewards, pastoral oversight, curriculum development, and outcomes across the subjects I line-managed. I am extremely proud to be part of the team at The Bridge School. I firmly believe that my experience, values and leadership will help support and drive the school forward. My aim is simple: to work collaboratively with colleagues to make The Bridge School the leading PRU in the country, where pupils thrive through an ambitious curriculum, high-quality teaching and a clear commitment to their success.



**Helen B**  
**Keyworker**

I am excited to join The Bridge School as the new Keyworker. I have many years' experience of providing academic and Pastoral support to students and families across schools in Halton and Warrington. I am passionate about supporting the young people I meet and helping them understand themselves and reaching their potential.



**Helen R**  
**Teacher with Deputy SENCO Responsibilities**

I am a dedicated teacher with a specialist in SEND and I am currently studying the NPQ SENCO qualification, reflecting my strong commitment to supporting students with additional needs. With experience working in a similar setting and a background in management, I bring both practical knowledge and leadership skills to my role. I am very excited about my new role as Teacher/Deputy SENCO at the Bridge School. As a mum of three, I understand the importance of nurturing, patience, and clear communication. These traits underpin my belief that positive relationships with students and their families are the foundation of a meaningful and successful educational experience for all. I am deeply passionate about SEND and equally enthusiastic about reading, actively promoting a love of reading for pleasure as a key part of personal and academic development.



**Sam M**  
**Community Teacher**

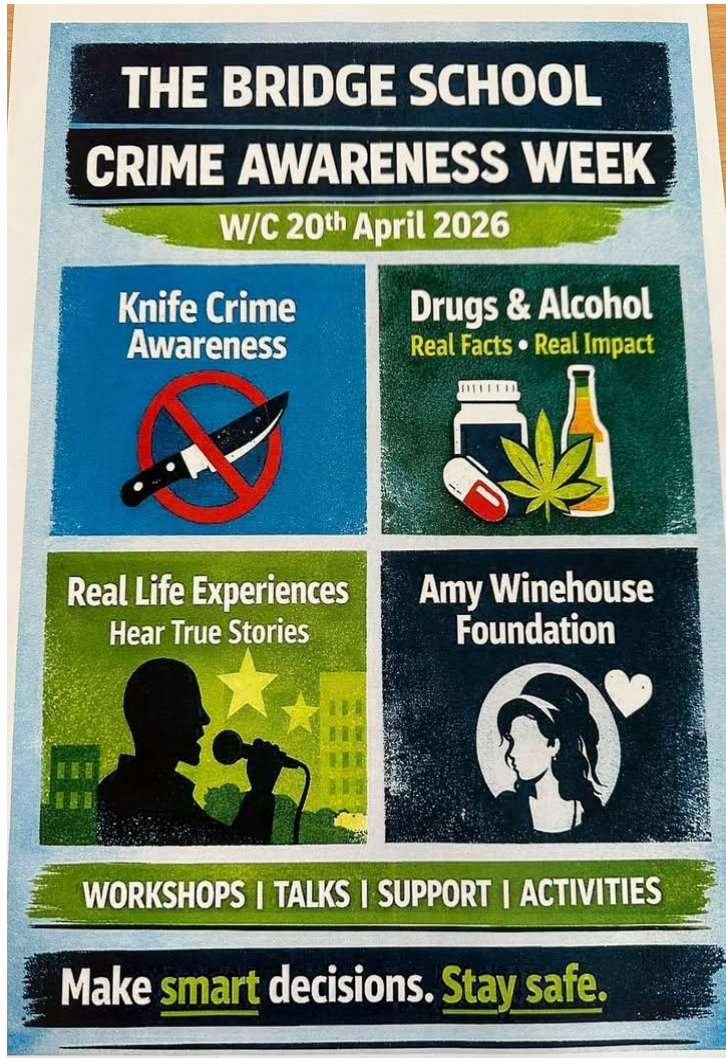
I am delighted to be joining The Bridge as the new Community Teacher. It is a privilege to be part of such a welcoming and vibrant school community, and I am looking forward to working together to prepare our Year 11's for their exams and support our other learners to progress with the curriculum. I have worked in schools for 15 years as a Primary teacher and Secondary teacher and I have also been Head of Key Stage when I worked in Dubai. Beyond the classroom, I am eager to get involved in the wider life of the school, including extracurricular activities. I am very much looking forward to getting to know both students and colleagues and contributing positively to the school.



**Jo-Ann R**  
**Teaching Assistant**

I am an experienced Teaching Assistant with a strong background in Pastoral support. I have previously worked in similar educational settings where I have helped nurture both the academic and emotional development of young people. As a mum, I bring empathy, patience, and a genuine understanding of children's needs into my work every day. I am particularly excited about my new role as an Intervention Teaching Assistant, Where I will be focusing on reading and phonics to help pupils build confidence and essential literacy skills. I am passionate about supporting young people to reach their full potential and creating a positive, encouraging environment in which they can thrive.

Students took an active role in **Crime Awareness Week**, engaging in a range of interactive workshops and practical activities designed to deepen their understanding of crime and its real-world impact. The week was brought to life through powerful real-life stories and shared experiences, giving students valuable insight into the challenges individuals and communities can face. A highlight of the programme was a visit from The Amy Winehouse Foundation, whose session encouraged open discussion around making positive choices and staying safe, leaving a lasting impression on everyone involved.





## Stepping into the role of an engineer

As part of Keepmoat's partnership with The Bridge School in Runcorn, students recently returned to site for the next stage of their construction insight programme — this time focusing on #engineering careers.

The visit followed two classroom-based sessions led by Chloe Harrison, Senior Engineer, where students were introduced to key engineering fundamentals including technical drawings, site planning, and the vital role engineers play in bringing developments to life. With this knowledge in place, students were invited to apply their learning in a real-world construction environment.

On arrival, students were issued full PPE and received a site safety briefing before joining Chloe for a guided walk-through of the early stages of the development. Using the same layout plans they had studied in school, students were able to see how drawings translate into real houses, roads, footpaths, and service routes — making clear connections between theory and practice

They took part in activities which helped demonstrate that engineering is not just about calculations, but also communication, collaboration, and problem-solving on site. Students also heard from Mike Hinchliffe, Site Manager, who shared his personal career journey, the challenges he faced, and the pride that comes with delivering new homes and community spaces.

This session forms part of a longer programme designed to broaden understanding of the homebuilding industry, raise aspirations, and showcase the wide range of career pathways available. By combining classroom learning with live site experience, we're helping young people build confidence and explore futures they may not have previously considered.

A great example of how strong local partnerships can help inspire the next generation of construction talent. Thank you to Graham Dodd and your wonderful students!

Liverpool City Region Careers Hub

Gill Walsh and Gill Wood



## Chester Zoo

Before the Easter break, the whole school went on a trip to Chester Zoo. This was an exciting experience for everyone, filled with amazing animals, beautiful habitats, and lots of opportunities to learn about wildlife conservation. Students were well behaved and thoroughly enjoyed the day.



## GCSE Exam Timetable

GCSE Exams are not far away, with the first one starting on 12<sup>th</sup> May.

Please familiarise yourself with the below timetable to ensure your child arrives promptly and does not miss an exam. Text messages will be sent out to parents the night before to remind your child of their exam.

- **For morning exams, students need to arrive in school by 8.45am (breakfast provided)**



### Summer 2026 Exams

Day	Date	Exam	Paper No.	Exam Code	Duration	Start Time
<b>Week 1 (W/C 11/05/26)</b>						
Tuesday	12th May	GCSE Biology	1 of 2	8461 (F)	1 hr 45 mins	1.30pm
Thursday	14th May	GCSE Maths	1 of 3	1MA1 (F)	1 hr 30 mins	9.15am
<b>Week 2 (W/C 18/05/26)</b>						
Thursday	21st May	GCSE English Language	1 of 2	1EN2	1 hr 55 mins	9.15am
<b>HALF TERM (WC 25/05/26)</b>						
<b>Week 3 (W/C 01/06/26)</b>						
Wednesday	3rd June	GCSE Maths	2 of 3	1MA1 (F)	1 hr 30 mins	9.15am
Friday	5th June	GCSE English Language	2 of 2	1EN2	1 hr 55 mins	9.15am
<b>Week 4 (W/C 08/06/26)</b>						
Monday	8th June	GCSE Biology	2 of 2	8461 (F)	1 hr 45 mins	9.15am
Wednesday	10th June	GCSE Maths	3 of 3	1MA1 (F)	1 hr 30 mins	9.15am

### School Nurse Drop In

Claire Snook will be in school for any students wishing to drop in for a chat on the following dates:

- Tue 12<sup>th</sup> May
- Wed 13<sup>th</sup> May
- Tue 19<sup>th</sup> May
- W/C 1<sup>st</sup> May – no drop in this week
- Tue 9<sup>th</sup> June



*\*These may be subject to change*